

# Undy Designs

by: **UndyYarncrafts** The Old Temperance Hall, West End, Magor, Monmouthshire NP26 3HT

Tel: 01633 881183 Email: designs@undyarns.co.uk

[www.undyarns.co.uk](http://www.undyarns.co.uk)

## Short Sleeve Lace Cardigan

### using 4 ply Brusshe

**Materials:** 1 x 250g Undy Yarncrafts 4ply Brushed Acrylic 'Brusshe' and a small amount of contrast (optional)

**Machine:** Any standard gauge machine with ribber and lace carriage

**Measurements:** To fit 34(36, 38, 40, 42)ins 87(92, 97, 102, 107)cms

**Actual Measurements:** 38(40, 42, 44, 46)ins 97(102, 107, 112, 117)cms

**Tension:** 27 stitches and 41 rows to 10cms - we used T5 on a Brother machine

**Weight of garment:** 150g

**Note:** Punch cards as detailed overleaf or program your machine before starting.

### RIGHT FRONT

Insert the lace card and set on row 1.

Using the contrast yarn, cast on 51(54, 58, 62, 64) stitches for a 2 x 2 rib. T0/0 Knit 3 circular rows. RC000 T1/1 Knit 2 rows. Change to Main yarn and knit to RC40. Transfer all stitches from the ribber to the main bed.

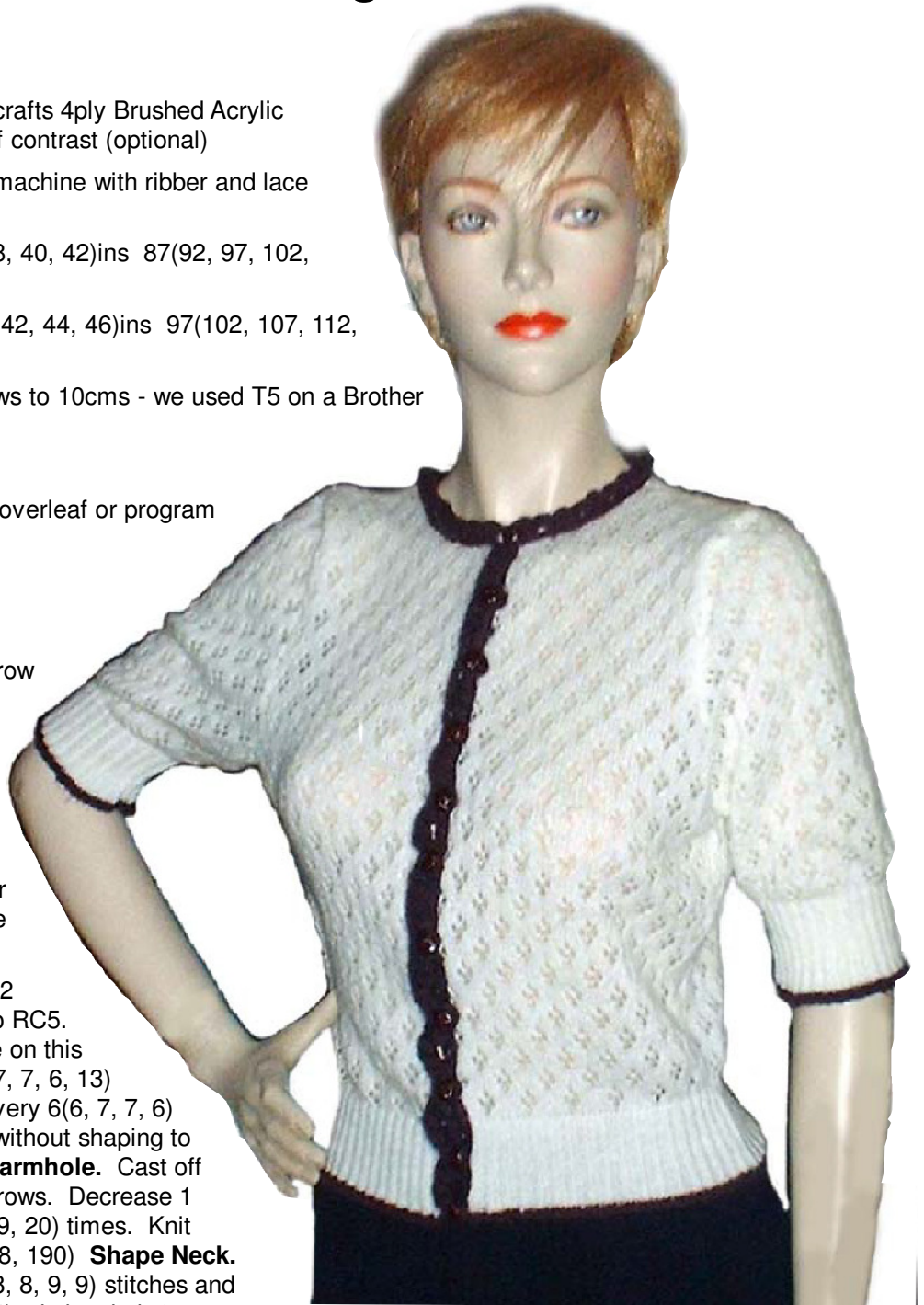
RC000 Using main tension knit 2 rows. Using lace carriage knit to RC5.

Increase 1 stitch on the left side on this and every 5(5, 6, 6, 7)th row 9(7, 7, 6, 13) times in all. Increase 1 stitch every 6(6, 7, 7, 6)th row 4(7, 6, 6, 1) times. Knit without shaping to RC75(83, 91, 99, 107). **Shape armhole.** Cast off 1(3, 3, 5, 5) stitches and knit 2 rows. Decrease 1 stitch every 2 rows 16(17, 18, 19, 20) times. Knit straight to RC 146(158, 158, 178, 190) **Shape Neck.**

Working on the right cast off 8(8, 8, 9, 9) stitches and knit 2 rows. Cast off 3(5, 4, 3, 4) stitches knit 2 rows.

Cast off 3(4, 3, 3, 3) stitches and knit 2 rows 2(1, 2, 2, 2)

times. Decrease 1 stitch every alternate row 2(3, 1, 2, 2) times. Decrease 1 stitch every 3rd row 1(1, 2, 2, 2) times. Decrease 1 stitch and knit to RC171(183, 196, 208, 220). Cast off the remaining stitches.



*Whilst every effort has been made to be accurate, we cannot accept any responsibility for loss due to errors in this pattern.*

*If in any difficulty please telephone, write or Email for advice.*

Copyright Undy Yarncrafts 2006

## LEFT FRONT

Knit as for the Right Front but reverse all shapings.

## BACK

Using the contrast yarn, cast on 104(110, 118, 124, 130) stitches for a 2 x 2 rib. T0/0 Knit 3 circular rows. RC000 T1/1 Knit 2 rows. Change to Main yarn and knit to RC40. Transfer all stitches from the ribber to the main bed.

RC000 Using main tension knit 2 rows. Using lace carriage knit to RC6. Increase 1 stitch on both sides of this and every 5(6, 6, 6, 7)th row 9(7, 7, 6, 13) times. RC50(40, 48, 42, 96) increase 1 stitch on this and every 6(6, 7, 7, 8)th row 4(7, 6, 8, 1) times.

RC74(88, 90, 98, 106) **Shape armhole.** Cast off 1(3, 3, 5, 6, 6) stitches at the beginning of the next 2 rows 15(1, 1, 1, 1) times. Decrease 1 stitch every 3(2, 2, 2, 2) rows 1(16, 17, 18, 19) times. Decrease 1 stitch and knit without shaping to RC166(178, 188, 200, 214)

**Shape neck.** Cast off the centre 18(18, 18, 20, 20) stitches. Using ravel cord knit all the stitches on the left back to A position.

Take care not to push any needles into Holding Position when using the lace carriage. Make a note of the position on the punchcard. Working on the remaining stitches on the right Knit 2 rows. At the neck edge cast off 9(9, 10, 9, 10) stitches. Knit 2 rows. Cast off 4(5, 4, 5, 5) stitches and knit to RC171(183, 196, 208, 220). Cast off remaining stitches

Bring all the stitches on the left back into working position. RC166(178, 188, 200, 214). Turn the punchcard back and knit as for the right side.

## SLEEVES - knit 2

Using the contrast yarn, cast on 80(82, 84, 86, 88) stitches for a 2 x 2 rib. T0/0 Knit 3 circular rows. RC000 T1/1 Knit 2 rows. Change to Main yarn and knit to RC40. Transfer all stitches from the ribber to the main bed.

RC000 Using main tension knit 2 rows. Using lace carriage knit to RC2(2, 2, 2, 2). Increase 1 stitch on each side and knit 2 rows 12 times in all. RC26 Increase 1 stitch on each side and knit 3(2, 2, 2, 2) rows 2(3, 3, 3, 3) times.

RC 36(34, 34, 34, 32) **Shape Armhole.** Cast off 4(4, 3, 4, 5) stitches at the beginning of the next 2 rows. Decrease 1 stitch each end of every 2(2, 1, 2, 2) rows. 8(7, 4, 10, 10) times. Decrease 1 stitch at each end of the next and every 3(3, 2, 4, 4) th row 12(14, 7, 10, 12) times. Decrease 1 stitch each end of the next and every 2(2, 3, 3, 3) row 8(8, 14, 2, 1) times. Decrease 1 stitch on the next and every (every, 2, 2, 2) rows 4(3, 11, 11, 10) times in all.

RC110(112, 118, 124, 126) Leaving a long length of yarn break off and thread through the double eyed bodkin. Take off the stitches one at a time on to the yarn. When sewing the sleeve into the armhole shaping this will help to avoid a sharp edge.

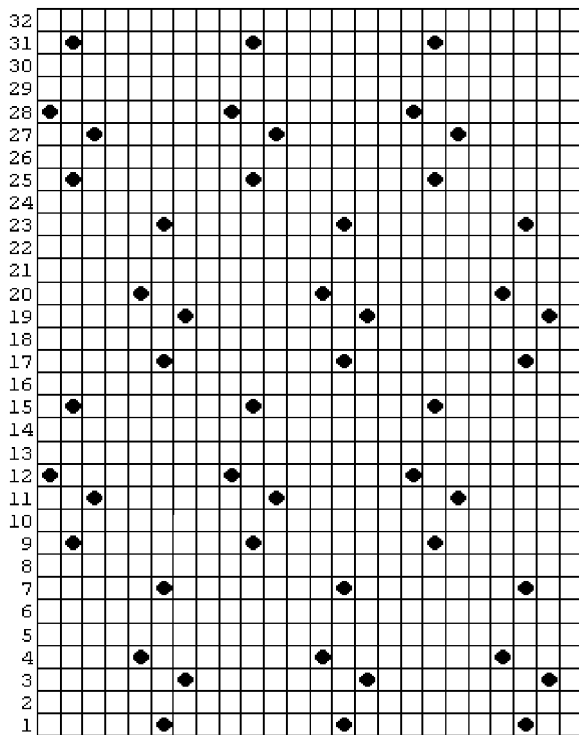
## MAKE UP

Sew the shoulder seams together. Sew in the sleeves. Sew the underarm seams.

## SLIP STITCH BAND

Using the contrast yarn cast on the centre 13 stitches using the 'e' wrap method .Insert the punchcard into the machine and lock on row 1. Knit 1 row. Set the carriage to select the punchcard and knit 1 row. Release the punchcard and set the carriage to slip in both directions. Knit until you have enough to fit along the front edge, round the back neck and back down the other front, plus an extra few cms.

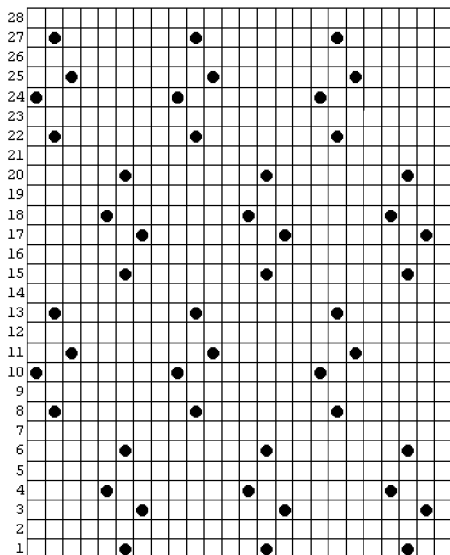
Sew the slip stitch edge into position, unravel any surplus and bind off.



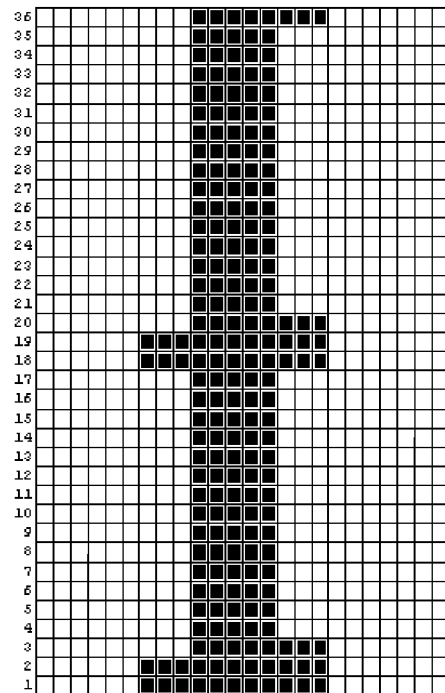
### Brother Lace Knitting Sequence

2 passes with lace carriage - 2 rows knit  
 4 passes with lace carriage - 2 rows knit  
 2 passes with lace carriage - 2 rows knit  
 2 passes with lace carriage - 2 rows knit  
 Repeat this sequence throughout

Lace Punchcard for Brother/Toyota Machines



Lace Punchcard for Knitmaster/Silver Machines



Slip Stitch punchcard